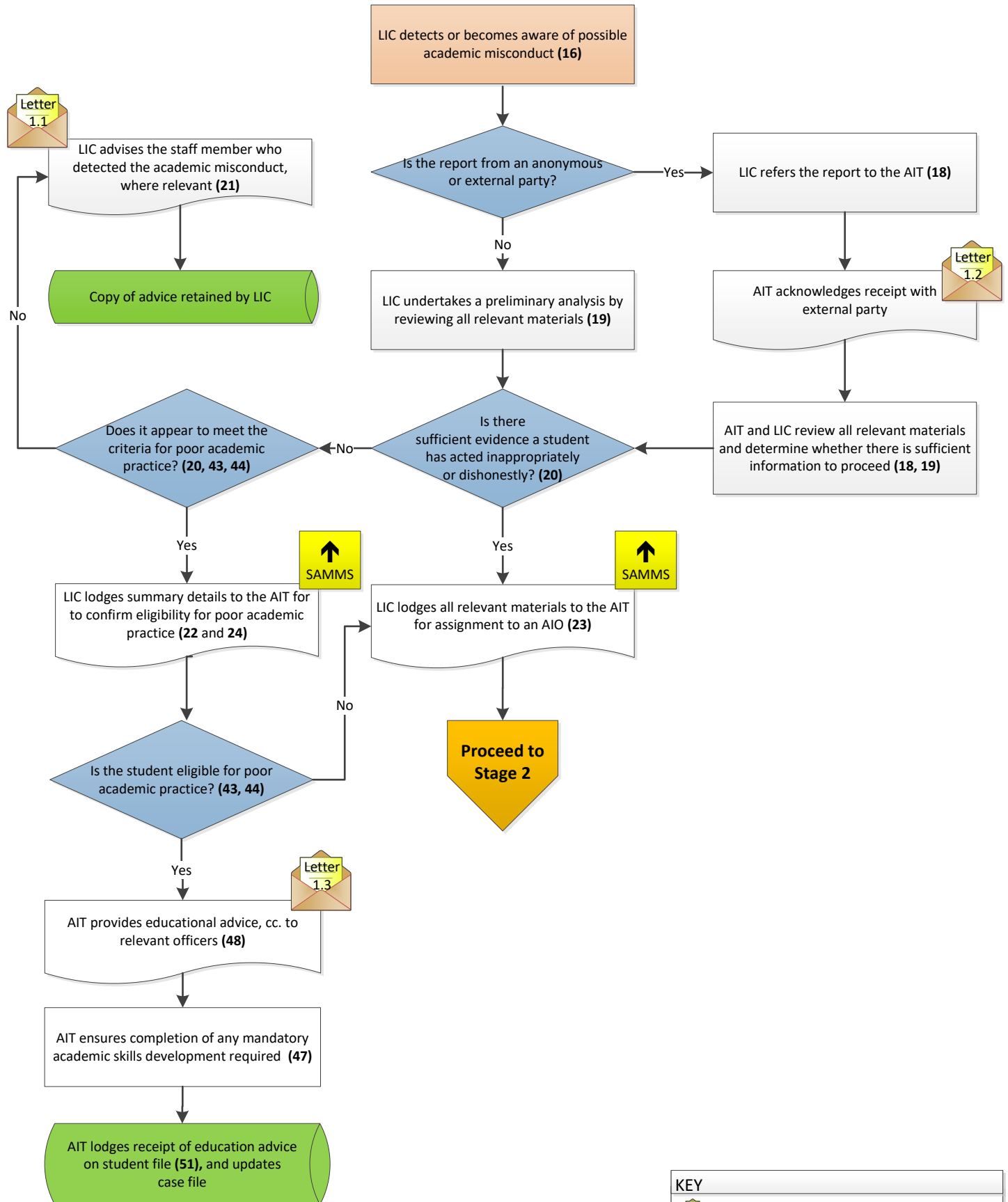


Academic Misconduct Procedures

Stage 1: Preliminary analysis by Lecturer in Charge (LIC)

To be used in conjunction with the *Student Academic Integrity and Misconduct Procedure* published at: <https://policy.acu.edu.au/document/view.php?id=223>

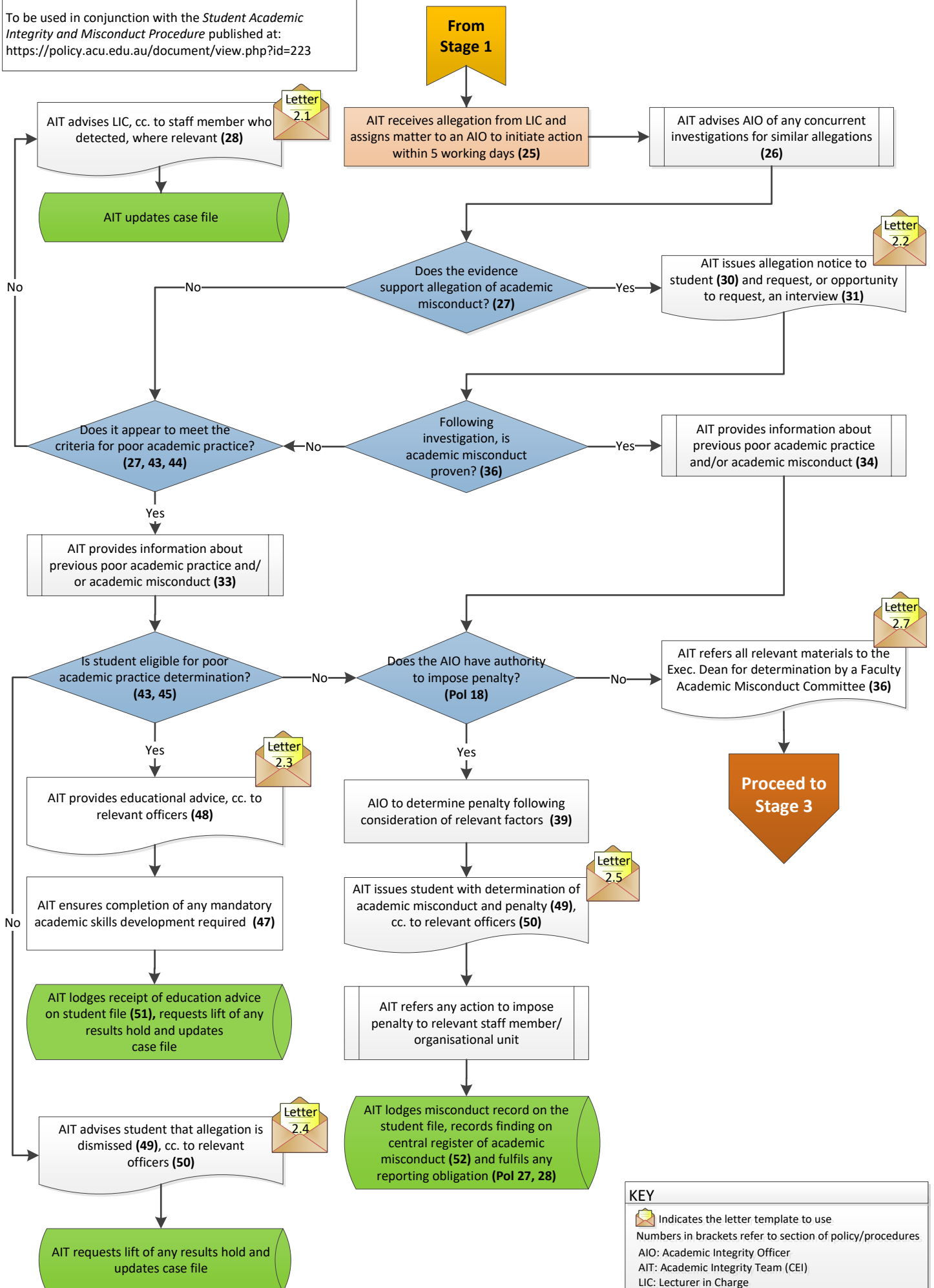


KEY	
	Indicates the letter template to use
	Numbers in brackets refer to section of policy/procedures
	AIO: Academic Integrity Officer
	AIT: Academic Integrity Team (CEI)
	LIC: Lecturer in Charge

Academic Misconduct Procedures

Stage 2: Investigation of allegation by Academic Integrity Officer (AIO)

To be used in conjunction with the *Student Academic Integrity and Misconduct Procedure* published at: <https://policy.acu.edu.au/document/view.php?id=223>



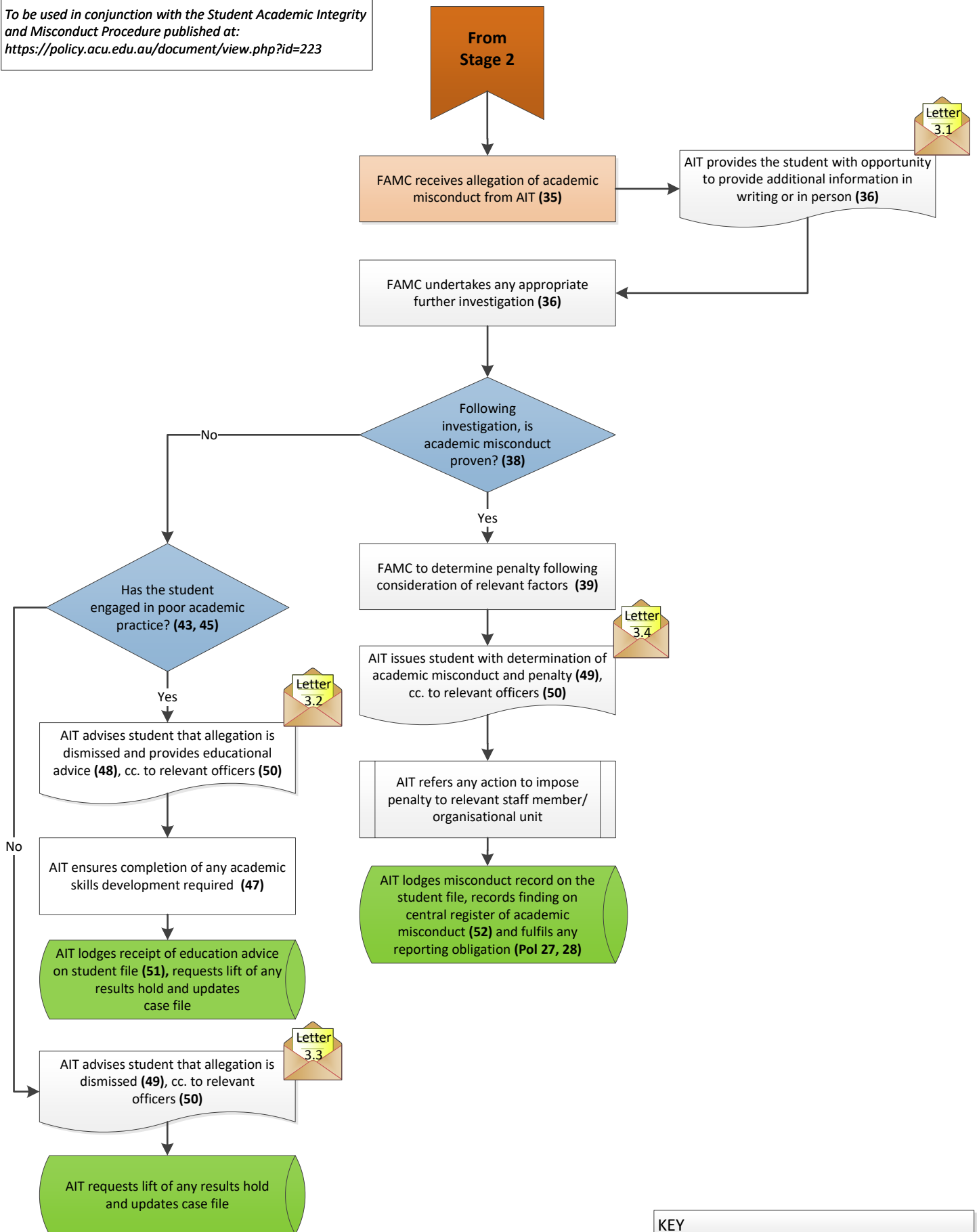
KEY

- ✉ Indicates the letter template to use
- Numbers in brackets refer to section of policy/procedures
- AIO: Academic Integrity Officer
- AIT: Academic Integrity Team (CEI)
- LIC: Lecturer in Charge

Academic Misconduct Procedures

Stage 3: Determination by Faculty Academic Misconduct Committee (FAMC)

To be used in conjunction with the Student Academic Integrity and Misconduct Procedure published at: <https://policy.acu.edu.au/document/view.php?id=223>



KEY	
	Indicates the letter template to use
Numbers in brackets refer to section of policy/procedures	
AIO: Academic Integrity Officer	
AIT: Academic Integrity Team (CEI)	
FAMC: Faculty Academic Misconduct Committee	
LIC: Lecturer in Charge	